



BUSOGA FORESTRY COMPANY

COMPANY PROFILE





WHO WE ARE

Established in 1996, Busoga Forestry Company (BFC) Ltd is a subsidiary of Green Resources AS (GRAS), a leader in East African timber manufacturing. GRAS owns 35,000ha of standing forest in Mozambique, Tanzania and Uganda, all established through its own planting activities.

BFC holds tree planting licenses to establish commercial forest plantations on 6,466ha in Bukaleba Central Forest Reserve, Mayuge district and 2,669ha in Kachung CFR, Dokolo district.



OUR VISION

TO ESTABLISH EAST AFRICA'S LEADING FOREST INDUSTRY COMPANY WORKING FOR THE BENEFIT OF OUR STAKEHOLDERS, EMPLOYEES AND THE COMMUNITIES WHERE WE OPERATE



OUR VALUES

- To establish and maintain fast growing and high-yielding forests as effectively as possible.
- Provide quality products and services to our customers
- Adhere to the highest environmental and social standards
- Appreciate and recognise employee performance;
- Contribute towards the upliftment of local communities through sustainable rural development projects

FOREST DEVELOPMENT



BFC has established sustainable forest plantations which supply raw material for the manufacturing of quality timber products.



4946ha

Planted with pine



1660ha

Planted with Eucalyptus



180ha

Temporary unplanted Areas



1550ha

Conservation areas



CERTIFICATION

Certification is a voluntary process that was adopted by BFC as a tool aimed at providing assurance to our stakeholders that our timber products are from sustainably managed forests..

To this end, BFC follows the highest national and international corporate, social & environmental standards including Certification based on the Forest Stewardship Council™ FSC™ Standards, the world's leading standards for responsible forest management.

- Certified 9,135ha of Plantation- license number FSC™-C 106074.
- Chain of Custody Certification for its wood products FSC™-C 160538.

The company is also certified according to the following standards:

- **ISO 9001:2015** guarantees that BFC's products are manufactured through a high quality management system to meet client expectations.
- **ISO 14001:2015** Enables BFC to continually assess the environmental impact of its operations to ensure these operations are environmentally-friendly
- **ISO 45001:2018** Provides assurance that the health and safety of BFC staff is not compromised in its production process. BFC has built a work culture where job-related safety risks are continually assessed and prevented.
- **IPPC Certification** assures BFC clients that wood material from its Kiln drying process can be used to make food grade timber products
- **Uganda National Bureau of Standards (UNBS)**. BFC's pole treatment plant is also certified by UNBS.



By buying our FSC™ certified timber and forest products
you help take care of the Uganda's natural heritage



FSC™-C106074
FSC™-C160538 • www.fsc.org

CORPORATE SOCIAL RESPONSIBILITY

BFC has strong commitment to creating value for its shareholders and all stakeholders through developing and managing its plantation and industrial operations in socially responsible manner. This commitment can be seen through BFC's industrial investments, investments in the development of its staff, and communities.

As part of the community development plan agreed between the surrounding communities and BFC, the later has implemented several activities in those communities focusing on health, education, improved livelihoods and promotion of alternative income generating activities. These include:

- + Infrastructure;** BFC has opened up, upgraded and on a regular basis maintained community roads in its areas of operation.





- + Health Programs;** BFC has assisted with the expansion of Health Provision Facilities including the construction of maternity ward and two children wards in Bukaleba and Kachung, medical staff housing and sponsorship of the RAYS OF HOPE HOSPICE JINJA program of cervical cancer screening and detection in the Bukaleba area.
- + Girl Child Education;** The company offers full bursaries to excelling needy children to attend basic, secondary education as well as pursue studies in higher institutions of learning both within and outside the district of Mayuge.
- + Community Tree Planting;** Free tree seedlings are distributed to communities & institutions to establish private and community woodlots. This is to aid the process of poverty eradication, a millennium development goal for Uganda.



Clean & Safe Water;

BFC has so far drilled and constructed 3 bore holes and protected four water springs in and around Bukaleba. In Kachung, 5 bore holes and 3 protected springs have been rehabilitated

- + Local communities** are allowed access to sustainably harvested fuel wood, grass, fodder and medicinal plants. Improved agricultural and tree planting skills and techniques have also been passed on to the local communities.

+ MORE...
www.greenresources.no

PRODUCTS & SERVICES



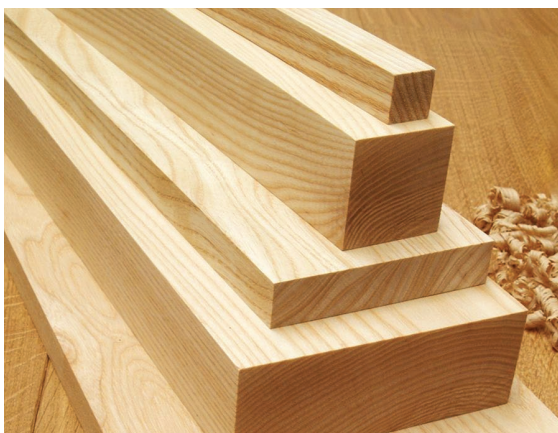
CCA Treated Poles

Our pressure treatment plant produces CCA treated timber, utility poles for power and telecom distribution, as well as fencing posts for home and farming projects.



Structural Timber

BFC provides high quality structural timber for roofing and form work on your construction projects. Our timber has been used on several private and public buildings including schools, hospitals, Universities and private apartments.



Value-added Timber

Our value addition line produces a range of bespoke timber products for joinery works, flooring, ceiling and decking.



Certified Heat Treated Timber

BFC operates a state-of-the-art Kiln to produce high quality timber that can be used for building projects. BFC also possesses the IPPC mark and certification for timber that can be used to make food-grade wooden pallets.



Sustainable Wood Biomass

We offer a range of sustainable wood fuel products in bulk quantities. These include pine and eucalyptus firewood, wood chips and sawdust.

We also offer clean dry wood shavings that can be used as littering in poultry farms.



Tree Seedlings

Our tree seedlings nursery is certified by SPGS (Saw log Production Grant Scheme) for quality seedlings production. A variety of tree seedlings are produced including P Caribaea (Pine), Pine hybrids, and hybrid Eucalyptus (GxU) cuttings.



BUSOGA FORESTRY COMPANY

Head Office

9B Kyaggwe Avenue, Jinja
P. O. Box 1900, Jinja
Tel: +256 (0) 434 121835
Email: bfc@greenresources.no
www.greenresources.no

Wood treatment plant

Plot 79 – 83 Industrial Estate Road,
Masese, Jinja
Tel: 0704 247 596 / 0774 561 510

Jinja Sales Yard.

Along Jinja – Iganga highway
Near Railway Station - Jinja
Tel: 0702 335 623

Bukaleba Plantation & Sawmill
Kasaali station, Bukaleba
Mayuge
Tel: 0704 427 285 / 0775 306 350

Seeta Sales Yard

Nantabulirirwa - Seeta
Opposite Mogas
Tel: 0758 749 127

Kachung Plantation - Dokolo Office

P. O. Box 386, Lira
Tel: 0752 071 396 / 0755 268 419



● OUR CLIENTS

Below are some of BFC's large scale customers, the company also sells to small scale as well as one-off customers.

- **Rural Electrification Agency (REA)**
- **UMEME**
- **Huawei**
- **Excel Construction Ltd**
- **Ambitious Construction Ltd**
- **HL Construction**
- **Lutheran World Federation (LWF)**
- **Cementers Uganda Ltd.**
- **Dott Services Ltd**
- **TBEA**
- **China Railway Jianchang Engineering Co. Ltd**
- **Nile Plywoods**
- **Kakira Sugar Works**
- **Shreej Wood mart Ltd**
- **Krishna Construction Co. Ltd**
- **Costa Construction Services Ltd**
- **Pearl Engineering Company Ltd**
- **National Enterprise Corporation**
- **M & T Construction Ltd**
- **EGISS Construction Ltd**
- **Uganda Breweries Ltd**
- **Nilus Group Ltd.**
- **Yalelo Uganda**
- **Johs. Gram-Hanssen A/S**

